

JOIN OUR CRO PARTNER PROGRAM

BEING A SIGNANT PARTNER COMES WITH PERKS

Sponsors want to know what your competitive edge is. Let's show them. Become a Signant Health CRO Partner to make your services stand out. As a partner you will be equipped with our CRO-tailored resources, support, and cost savings to give you a commercial and operational edge.

COMMERCIAL EDGE

- **Commercial Terms Advantage.**
With partner status, you will benefit from exclusive commercial terms that will reward your commitment to the partnership and demonstrate significant value to your sponsors.
- **Business Development Support.**
Boost the success of your sales team by working with us on strategic account planning, bid defenses, and get access to our latest sales tools and sales training materials.
- **Clinical, Scientific, & Technical Expertise.**
Our in-house clinicians, scientists, and technical experts will offer complimentary review of your protocols to ensure low patient and site burden, as well as highly compliant, and regulatory defensible datasets.
- **Joint Marketing.**
To ensure the commercial success of our partnership, we'll develop joint promotional materials, build thought leadership, and generate demand.

OPERATIONAL EDGE

- **Training.**
Increase your knowledge on our products and the processes they touch, as well as gain insight into implementation so you're ready for study start.
- **Dedicated Resources.**
We'll make sure this partnership is tailored for you by providing governance, including a regular cadence of communications, peer to peer relationships between senior level contacts, and process improvements to meet your organizational needs.

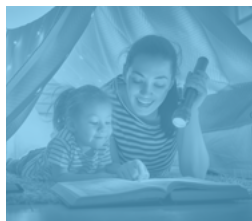


GET STARTED TODAY

Visit us at signanthealth.com/partners/ to learn more and apply.

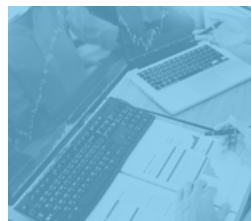
YOUR SUCCESS MATTERS TO US

We'll make sure you are distinguished and trusted for delivering in these areas: Patient Experience, Patient Data, Endpoint Quality, and Clinical Supplies.



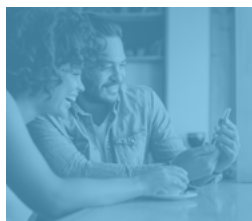
PATIENT DATA

- eCOA/ePRO
- eCOA/eClinRO
- Sensors & Wearables



CLINICAL SUPPLIES

- IRT
- Forecasting & Planning
- Inventory Management



PATIENT EXPERIENCE

- eConsent
- Patient Engagement



ENDPOINT QUALITY

- Rater Training & Data Quality Monitoring
- Scientific & Clinical Consulting
- Data Quality Analytics



"In 2018 CRF Health and Bracket became one company, now known as Signant Health, bringing together a unique set of complementary expertise, products and services. We will continue to support our partners with protocol design and optimization, eCOA data collection, data quality oversight, patient engagement and consent, and clinical supply management, however, the solutions formed by the combination of these products and services makes our work with CRO partners more expansive and less transactional than ever before. The time is right for us to make a significant investment in our partnerships. That is why we have reimagined our approach to partnership engagement and have established the Signant Health Partner Program. We recognize that by working more closely with our partners we can bring additive value to their existing infrastructure via Signant's solutions, and together we can more powerfully impact data quality and clinical trial execution. Our commitment to our partners is this: we will get to know what suits your business and your people best and we will tailor commercial and operational support to enable your success. When our partners succeed, we succeed."

Chris Crucitti, Chief Commercial Officer, Signant Health

WHO IS SIGNANT HEALTH?

The best technology succeeds in the background. Signant Health provides solutions that simplify every step of the patient journey to make it easier for people to participate in, and for sites and study teams to run, clinical trials. Signant unites eCOA, eConsent, Patient Engagement, IRT, Clinical Supplies and Endpoint Quality into the industry's most comprehensive patient-centric suite – an evolution built on more than 20 years of proven clinical research technology. Our intense focus on the patient experience, deep therapeutic area expertise and global operational scale enable hundreds of sponsors and CROs (including all Top 20 pharma) to extend the reach of drug development, expand patient opportunities and improve data quality – helping them bring life-changing therapies to our families and communities around the world. Take a significant step toward patient-centricity at signanthealth.com.

CRF Health and Bracket are now Signant Health.

