

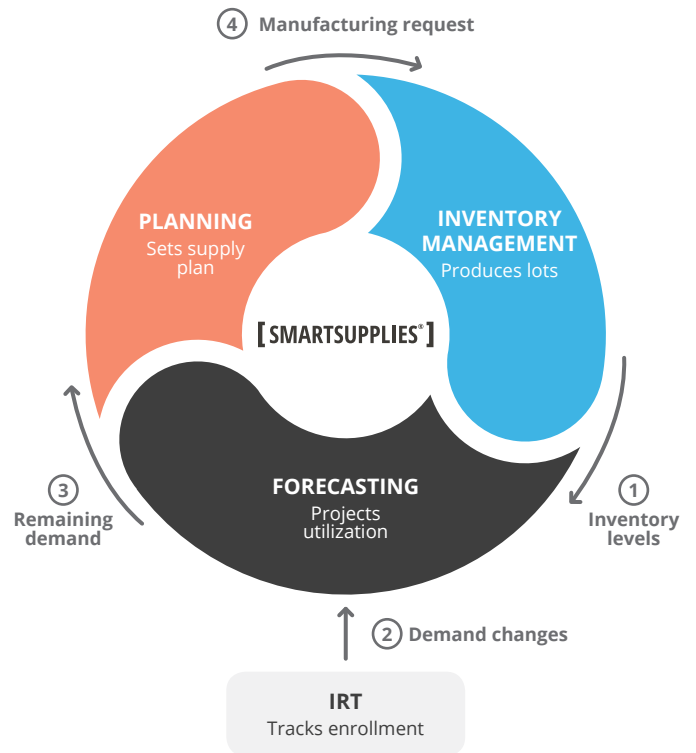
# THE INDUSTRY'S ONLY FULLY INTEGRATED ENTERPRISE-WIDE SOLUTION THAT PUTS YOU IN FULL CONTROL OF YOUR CLINICAL SUPPLY CHAIN

Clinical supply chains are well known to lag behind their commercial counterparts in sophistication and visibility. As a result, they are often managed with impulsive decisions, forecasting guesswork, and fire-fighting issues, which produces waste, creates delays, and adds cost.

The SmartSupplies® product for Forecasting & Planning is the industry's only fully integrated, enterprise-wide solution that puts you in full control of your clinical supply chain. It dynamically forecasts and graphically represents optimal manufacturing plans. It is purpose-built for clinical supply chains and made to handle the variability that results from protocol changes, undefined doses, unexpected recruitment rates, batch failures, and non-availability of raw materials, to name a few.

It works seamlessly with the SmartSupplies Inventory Management solution to provide complete visibility from demand creation to last subject out across all bill of materials. By bridging the gap between demand forecasting and inventory creation it allows you to:

A closed-loop system to improve the accuracy of clinical supply production



## REDUCE SUPPLY OVERAGES AND ASSOCIATED COSTS

It facilitates risk-based scenario planning for supply and demand at the study and program level, saving companies like AstraZeneca up to 20% on their annual investigational drug supply budgets.

## MAKE BETTER MANUFACTURING DECISIONS

It uses live enrollment metrics to display the latest projections and changing demand, aggregated across trials and clinical programs, so your manufacturing team can dynamically update their plans.

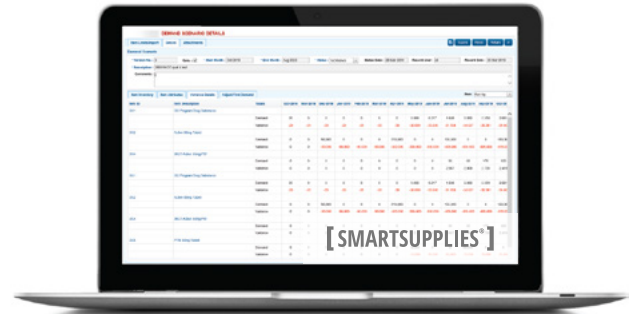
## REDUCE EFFORT TO BUILD DEMAND AND SUPPLY PLANS

Unlike other solutions that use pre-study assumptions to build forecasts and supply plans, our solution works with high-level information and can be updated anytime, making it simple for your forecasters to use.

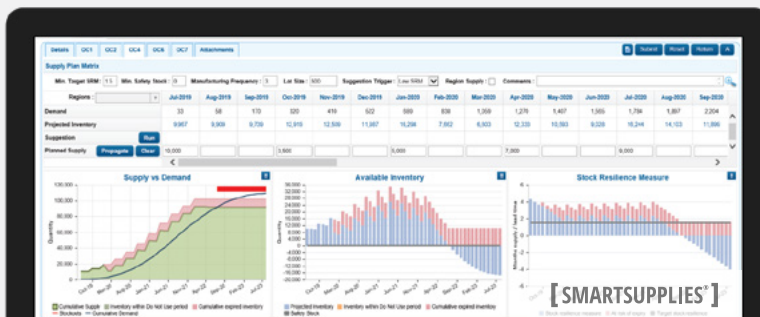
# THE LATEST IN CLINICAL SUPPLY FORECASTING AND PLANNING IS HERE

## DYNAMIC FORECASTING IN AN EASY-TO-USE SYSTEM

The SmartSupplies system models a time-phased demand schedule at the protocol or portfolio level, based on your parameters such as dosing, enrollment, dropout rate, etc. Forecasts are effortlessly updated mid-study to reflect changes to the protocol including enrollment dates, actual enrollment, countries, treatment arms or the materials used. The Forecasting system uses lot based scenarios to consider multiple manufacturing factors and it can easily navigate even the most complex studies, including titration and adaptive designs.



Visualize the latest supply and demand at the project and program level



## INVENTORY PLANNING

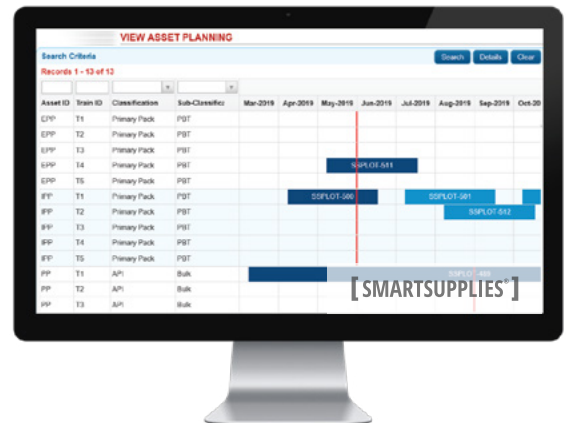
The system's color-coded graphs are dynamically updated with real-time forecast data, pulled in directly from the SmartSupplies Forecasting module or via any other sources such as simulations, Excel, and SAP. They graphically display the latest projections and changing demand.

## ASSET PLANNING

Once project supply plans have been reviewed and updated, manufacturing lots can be planned and scheduled in fully configurable internal and external assets. This ensures internal capacities are optimized (e.g. manufacturing, testing and release) and that strategic partners have greater visibility into upcoming workloads.

## AN END-TO-END CLINICAL SUPPLY CHAIN SOLUTION

The Clinical Supply Forecasting & Planning solution works seamlessly with the SmartSupplies Inventory Management solution, allowing you to build a demand and supply plan, make, order, test, release, and return clinical supplies within one 21 CFR part 11 compliant enterprise suite.



## WHO IS SIGNANT HEALTH?

The best technology succeeds in the background. Signant Health provides solutions that simplify every step of the patient journey to make it easier for people to participate in, and for sites and study teams to run, clinical trials. Signant unites eCOA, eConsent, Patient Engagement, IRT, Clinical Supplies and Endpoint Quality into the industry's most comprehensive patient-centric suite – an evolution built on more than 20 years of proven clinical research technology. Our intense focus on the patient experience, deep therapeutic area expertise and global operational scale enable hundreds of sponsors and CROs (including all Top 20 pharma) to extend the reach of drug development, expand patient opportunities and improve data quality – helping them bring life-changing therapies to our families and communities around the world. Take a significant step toward patient-centricity at [signanthealth.com](http://signanthealth.com).

CRF Health and Bracket are now Signant Health.

